

DMACK

 **MADE
IN THE UK**
ALL TYRES ARE MANUFACTURED IN THE UNITED KINGDOM

MOTORSPORT RANGE 2017



WRC
FIA WORLD RALLY
CHAMPIONSHIP

//WELCOME TO THE DMACK MOTORSPORT RANGE

.....

DMACK has been an authorised tyre supplier to the FIA World Rally Championship since 2011. Its team has over 100 years of motorsport experience and has developed a full range of competition tyres, designed and built in the UK, with an emphasis on providing premium brand performance.

In 2012 DMACK became one of only four tyre manufacturers to score a fastest overall stage time in the World Rally Championship.

Since then, the company has built on its extensive experience as a WRC supplier, taken overall victories in the FIA European Rally Championship and led WRC rallies on three separate occasions.

In 2017 DMACK is competing at the very top level of the WRC, using a completely new range of asphalt and gravel products, and scored three stage victories on the opening Rallye Monte Carlo.

The WRC construction technology and performance compounds are incorporated across the full range of customer products.



DMACK

// TECHNICAL

INFORMATION

DMACK uses the following terms to describe its tyres:

205/65 R15 DMG+22 GS62

205	Width of tyre section in mm
65	Aspect ratio
R	Radial construction
15	Wheel rim diameter in inches
DMG+22	Tread pattern
GS62	Tyre compound

DMACK's gravel compounds use the following coding:

GS62

GS	Type (gravel soft or gravel hard)
6	Hardness (2,4,6 or 8)
2	Version

DMACK's asphalt compounds use the following coding:

XS6+

XS	Hardness (W, XS, S, M or H)
6	Version
+	Denotes a WRC specific compound



SAFETY NOTES

Please use the recommended width of wheel for each tyre. Asymmetric tyres must be used on the correct side, left or right, to maintain safety and performance.

Cutting of tyre treads can be used to optimise performance but will alter the tyre's characteristics.





//GRAVEL RANGE

Delivering grip, traction and puncture resistance

TREAD TECHNOLOGY & DESIGN

- 1 NEW TREAD DESIGN**
 - Optimised durability creating improved wear across tread
- 2 ASYMMETRIC TREAD**
 - Delivering lateral grip and superior traction
- 3 REINFORCED SIDEWALL**
 - Providing high impact resistance
- 4 PERFORMANCE COMPOUNDS**
 - Latest technology with proven results
- 5 ADVANCED CONSTRUCTION**
 - Giving greater precision and confidence



RECOMMENDED APPLICATION

Ensure you get the best performance by choosing the correct tyres for the conditions. Below is a breakdown of how we recommend you apply our range to a variety of gravel situations.

Compound			Surface			Condition			Ambient Temp (°C)								Pressure	
Hardness	Type	Tread Temp. Opt. Range (°C)	Soft/Sandy (Smooth)	Packed (Abrasive)	Hard/Rocky (v. Abrasive)	Wet	Damp	Dry	-5	0	5	10	15	20	25	30+	Cold	Hot
Extra Soft	GS8	10 - 50															1.8 - 2.0	2.0 - 2.2
Soft	GS6	40 - 70															1.8 - 2.0	2.0 - 2.2
Medium	GH4	60 - 100															1.8	2.2 - 2.3
Hard	GH2	80 - 130															1.7 - 1.8	2.2 - 2.4

// DMG+22



The DMG+22 features a brand new pattern developed for 2017.

With upgraded performance compounds, it is available in a range of sizes to suit all cars from R1 to R5 and is homologated for both international and national championships.

It is also the nominated tyre for competitors in WRC 2.

Size	Compound	Overall Diameter	Tread Width	Section	Wheel Size (optimum)
175/70 R15	GS8 GS6 GH4 GH2	622mm	165mm	187mm	(6) 7
185/70 R15	GS8 GS6 GH4 GH2	633mm	170mm	188mm	6 (7)
195/65 R15	GS8 GS6 GH4 GH2	633mm	170mm	188mm	6 (7)
195/70 R15	GS8 GS6 GH4 GH2	647mm	180mm	195mm	6 (7)
205/65 R15	GS8 GS6 GH4 GH2	647mm	180mm	204mm	6.5 (7)

The DMG+22 is also available in a range of smaller sizes, to suit competitors in historic and classic cars.

Size	Compound	Overall Diameter	Tread Width	Section	Wheel Size (optimum)
165/80 R13	GS8 GS6 GH4 GH2	590mm	140mm	165mm	5.5 (6) 6.5
185/70 R13	GS8 GS6 GH4 GH2	590mm	160mm	185mm	6 (7)
175/70 R14	GS8 GS6 GH4 GH2	595mm	146mm	170mm	5.5 (6) 7
185/65 R14	GS8 GS6 GH4 GH2	598mm	160mm	185mm	6 (7)

// DMG+2



The DMG+2 is the latest evolution tyre used by WRC competitors. It has a more closed tread pattern and deeper tread blocks for enhanced durability and tougher construction to protect against heavy impacts.

This tyre is well proven on WRC events having scored 30 overall stage wins and led three events outright during 2016.

Size	Compound	Overall Diameter	Tread Width	Section	Wheel Size (optimum)
215/65 R15	GS8 GS6 GH4 GH2	647mm	185mm	212mm	7 8



// ASPHALT RANGE

Delivering sealed surface performance and safety

TREAD TECHNOLOGY & DESIGN

- 1 NEW TREAD DESIGN**
 - Offering both grip and water dispersion
- 2 WIDER PROFILE**
 - Giving greater contact footprint
- 3 OPTIMISED WEIGHT**
 - For the best possible performance
- 4 UPGRADED COMPOUNDS**
 - To deliver traction in a range of conditions
- 5 ADVANCED CONSTRUCTION**
 - Providing high lateral stability



RECOMMENDED APPLICATION

Ensure you get the best performance by choosing the correct tyres for the conditions. Below is a breakdown of how we recommend you apply our range to a variety of asphalt situations.

Compound			Surface			Condition			Ambient Temp (°C)								Pressure	
Hardness	Type	Tread Temp. Opt. Range (°C)	Smooth	Medium	Abrasive	Wet	Damp	Dry	-5	0	5	10	15	20	25	30+	Cold	Hot
Rain	W	20 - 60															1.9 - 2.1	2.2 - 2.5
Extra Soft	XS	10 - 50															1.9 - 2.0	2.1 - 2.3
Soft	S	40 - 70															1.8	2.1 - 2.3
Medium	M	60 - 100															1.8	2.1 - 2.4
Hard	H	90 - 130															1.7	2.1 - 2.4

// DMT-RC22



With a wider profile, optimised weight and enhanced water dispersion, the new DMT-RC22 has been homologated for use in the WRC. It is also available in a wide range of sizes for historic and classic competition.

Size	Compound	Overall Diameter	Tread Width	Section	Wheel Size (optimum)
225/40 R18	XS6+ / S6+ / H6+	647mm	220mm	226mm	7.5 (8) 9

Size	Compound	Overall Diameter	Tread Width	Section	Wheel Size (optimum)
215/45 R13	XS5 / S5 / M5 / H5	530mm	200mm	215mm	7 8
225/45 R13	XS5 / S5 / M5 / H5	530mm	210mm	226mm	8 (9) 10
175/60 R14	XS5 / S5 / M5 / H5	570mm	170mm	182mm	5.5 (6) 6.5
215/45 R15	XS5 / S5 / M5 / H5	575mm	205mm	222mm	7.5 (8) 9
235/45 R15	XS5 / S5 / M5 / H5	594mm	220mm	237mm	7.5 (8) 9
305/35 R15	XS5 / S5 / M5 / H5	592mm	290mm	315mm	10 (11) 12
315/40 R16	XS5 / S5 / M5 / H5	660mm	280mm	310mm	10 (11) 12
235/40-R17	XS5 / S5 / M5 / H5	612mm	221mm	242mm	8 (8.5) 9

// DMT-RC2



The DMT-RC2 is an all new performance tyre for R1 to R5 cars competing in both national and international championships. It is available in sizes from 15 to 18 inch, in a range of performance compounds to suit all conditions.

Size	Compound	Overall Diameter	Tread Width	Section	Wheel Size (optimum)
195/50 R15	XS5 / S5 / M5 / H5	580mm	195mm	200mm	6.5 (7)
195/50 R16	XS5 / S5 / M5 / H5	605mm	195mm	200mm	6 (7) 7.5
205/45 R17	XS5 / S5 / M5 / H5	620mm	198mm	201mm	6.5 (7) 7.5
225/40 R18	XS5 / S5 / M5 / M5+/ H5	647mm	205mm	226mm	7.5 (8) 9

// DMT-W



The all new DMT-W is designed specifically to cope with standing water and wet asphalt. The symmetrical pattern features deep grooves to clear water but still retains large surface blocks, allowing it to be used in drying conditions.

Size	Compound	Overall Diameter	Tread Width	Section	Wheel Size (optimum)
225/40 R18	W5+	647mm	205mm	226mm	7.5 (8) 9

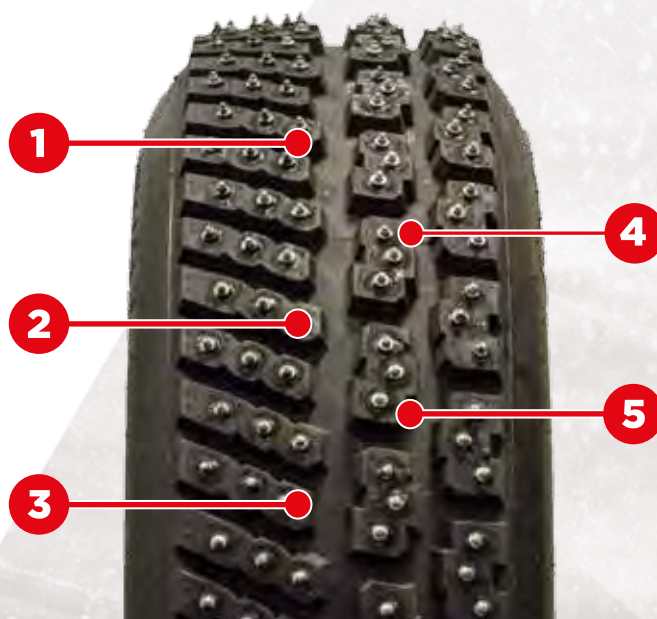


// WINTER RANGE

Delivering traction in tough conditions

TREAD TECHNOLOGY & DESIGN

- 1 NEW TREAD DESIGN**
 - Directional pattern optimised for stud retention
- 2 ULTRA STIFF COMPOUND**
 - For extremely high stud rigidity
- 3 NEW STUD MATERIAL**
 - With advanced design and protrusion
- 4 UPGRADED STUDDING SYSTEM**
 - Using latest technology and bonding
- 5 ADVANCED CONSTRUCTION**
 - For greater high-speed stability



// DMG-ICE2



With a brand new directorial pattern developed for the 2017 WRC, the DMG-ICE2 has the latest compound and studding technology with a complete focus on stud retention.

Size	Compound	Overall Diameter	Tread Width	Section	Wheel Size (optimum)
205/65 R15	ICE SUB	650mm	147mm	200mm	6.5 (7) 7.5

// DMT-ICE2 STUDDED



The DMT-ICE2 in studded form features 200 metal pins with a new profile, implantation and bonding system. The directional pattern is optimised with strong shoulder blocks delivering high lateral stability on Tarmac.

Size	Compound	Overall Diameter	Tread Width	Section	Wheel Size (optimum)
195/50 R16*	ICE SUB	605mm	170mm	195mm	6 (7) 7.5
225/40 R18	ICE SUB	646mm	195mm	222mm	7.5 (8) 8.5

*Available from November 2017

// DMT-ICE2 UNSTUDED



With greater siping density, the unstudded tyre has excellent performance on both loose and compact snow.

Size	Compound	Overall Diameter	Tread Width	Section	Wheel Size (optimum)
195/50 R16*	ICE SUB	605mm	170mm	195mm	6 (7) 7.5
225/40 R18	ICE SUB	646mm	195mm	222mm	7.5 (8) 8.5

*Available from November 2017



in association with

DMACK



DEVELOPING FUTURE CHAMPIONS

The FIA Junior World Rally Championship is a joint initiative between WRC tyre manufacturer DMACK and rally preparation experts M-Sport to help provide a competitive platform for the world's top young drivers. Throughout the Championship, drivers will make use of the DMG+22 and the DMT-RC2.



// DMG+22

Size	Compound	Overall Diameter	Tread Width	Section	Wheel Size (optimum)
175/70 R15	GS8 GS6 GH4 GH2	616mm	156mm	175mm	(6) 7



// DMT-RC2

Size	Compound	Overall Diameter	Tread Width	Section	Wheel Size (optimum)
195/50 R16	XS5 / S5 / M5 / H5	605mm	195mm	200mm	6 (7) 7.5



M-SPORT



CONTACT EMAIL

// Sales Support - Paul Handal
sales@dmacktyres.com

// Technical Support - Fiorenzo Brivio
technical@dmacktyres.com

// Media Support - Glenn Patterson
press@dmacktyres.com

SOCIAL MEDIA



@DMACK_Tyres



@DMACKTyre



DMACKTyres

**Telephone**

+44 1228 819954

Address

Helvellyn House,
Carlisle Airport Business Park,
Carlisle,
England,
CA6 4NW

WWW.DMACKTYRES.COM